

BACCHUS for BASS PLAYERS

Bacchus[®]
MUSICAL INSTRUMENTS



HANDMADE Series
CRAFT Series
GLOBAL Series
UNIVERSE Series
ACCESSORIES



Genuine Quality
Deviser
Guitars from Japan
www.deviser.co.jp

Bacchus[®]
MUSICAL INSTRUMENTS

Introduction

Since the establishment in 1994 Bacchus guitars have kept pursuing the best guitar building method with the principle of complete handcrafting. Our target is to offer instruments with splendid tone and playability sought after by serious players. Well-balanced construction, good feeling neck, creative tone and much more. This can only be created by the hands of experienced luthiers who take great care and attention to every single detail from expertise accumulated over many years.

Bacchus brand offers a wide range of products from entry models for the beginner to the high-end guitars for the most discriminating connoisseur guitarist. Regardless of your budget, all Bacchus products are manufactured with an aim to provide players with excellent quality at an affordable price.

INDEX

HANDMADE Series	3p
CRAFT Series	8p
GLOBAL Series	10p
UNIVERSE Series	11p





Special line

Black & Gold Package

The combination of matt black-oil finish and gold hardware gives the instrument a much more luxurious feel while maintaining the same quality tone and playability. The special line started in 2013.



WOODLINE DX-BGP
WOODLINE DX AC-BGP
TWENTY FOUR DX-BGP



TWENTY FOUR DX 4/E-BGP

WOODLINE DX5/E-BGP

WOODLINE DX4/E AC-BGP

*Basic specifications are common with normal models.

NEW *Woodline*

the Renewal of "Woodline" basses



Features

This best-selling model among Bacchus lineup renewed as "Woodline DX" with the new bridge Gotoh 404SJ instead of the former DB bridge. The new bridge offers 2 styles of stringing, through bridge or through body, which allows players a wider variety of tonal setting. The oil finish, the most characteristic feature of bacchus instruments is carefully done on the body. This thin-coat finish optimizes the tonal character of the light ash material and makes it produce a clear attack and a wide range of resonance.

Woodline DX's passive circuit includes the turbo switch function on its tone pot. When it is pulled up, the 2 pickups turns into series connection and will produce a powerful fat sound. The active model Woodline DX-AC is equipped with Bartolini XTCT preamp for a wide range of tone and a modern bass sound.





WOODLINE DX4/E RED/OIL

WOODLINE DX5/E BR/OIL

WOODLINE DX4/E AC BLU/OIL

WOODLINE DX5/M AC NA/OIL

WOODLINE DX WOODLINE DX AC

Color



Besides the regular finishes above, custom finish is possible with additional charge.

Specifications

BODY	ASH 2P
NECK	MAPLE 1P
FINGER BOARD	EBONY or MAPLE
RADIUS	310R(4st),400R(5st)
SCALE	34 inch
WIDTH AT NUT	38mm(4st),46mm(5st)
NUT	BONE
MACHINE HEADS	GOTOH GB11W
PICK UPS	Bacchus JB-ALV set
PRE-AMP*	bartolini XTCT
BRIDGE	GOTOH 404SJ
STRING PITCH	19mm(4st),18mm(5st)
CONTROLS	2Vol,1Tone(Pull up Turbo SW) * 1Vol,1Bal,Tre,Ba,Preamp On/Off SW
FINISH	OIL FINISH or TOP LACQUER
with ORIGINAL GIG BAG	

*Red letters:specs for the active models

NEW *Twenty Four*

For more versatility and power



Features

Our renewed Twenty-Four model offers more versatility and powerful tone to the player. The player is allowed to select desirable tone from natural single coil sound to fat and boomy lows.

The combination of Bartolini MCT-500 and XTCT preamp enables more particular soundmaking by its 3 band equalizer. The wide cutaway opened offers smooth access all the way to the 24th fret. Gotoh 404SJ bridge is newly installed instead of the former DB bridge to give the player 2 ways of stringing. All these features are equipped to offer players perfect versatility.





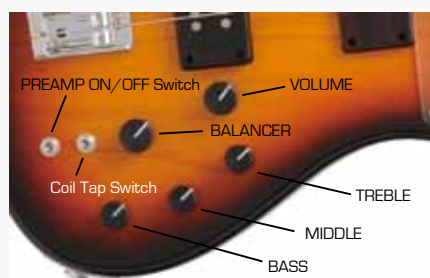
TWENTY FOUR DX4/E 3TS

TWENTY FOUR DX4/E BLK/OIL

TWENTY FOUR DX5/E BLU/OIL

TWENTY FOUR DX5/E RED/OIL

TWENTY FOUR DX



TWENTY FOUR DX CONTROLS

Color



*Top Lacquer

Besides the regular finishes above, custom finish is possible with additional charge.

Specifications

BODY	ASH 2P
NECK	MAPLE 1P
FINGER BOARD	EBONY or MAPLE
RADIUS	310R[4st], 400R[5st]
SCALE	34 inch
WIDTH AT NUT	38mm[4st], 46mm[5st]
NUT	BONE
MACHINE HEADS	GOTOH GB11W
PICK UPS	Bacchus JBT-ALV set
PRE-AMP	bartolini XTCT+MCT500
BRIDGE	GOTOH 404SJ
STRING PITCH	19mm[4st], 18mm[5st]
CONTROLS	1Vol, 1Bal, Tre, Mid, Ba, Preamp On/Off SW, Coil Tap-SW
FINISH	OIL FINISH or TOP LACQUER
with ORIGINAL GIG BAG	

Bacchus Craft Series

CRAFT Series



**BCS BACCHUS
CRAFT
SERIES**
MADE IN JAPAN

Bacchus Craft series started as a response to the player's demand for quality guitars at a lower price. This series is built with great attention to detail by experienced Japanese luthiers similar to the Bacchus Handmade series, but with more affordable cost.

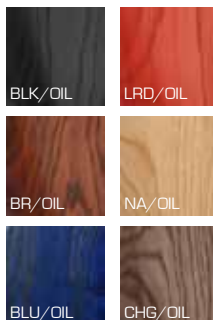
The Craft series instruments are offered in various oil finishes and transparent gloss-finishes to bring out the beautiful wood grain of the ash body and optimize the resonance.

STD-JB ASH and TF-ASH is equipped with Aguilar OBP-2 preamp and black hardware.

WL-JB ASH



Color



Specifications

BODY	ASH
NECK	MAPLE
FINGER BOARD	INDIAN ROSEWOOD
SCALE	34inch
RADIUS	310R(4st),400R(5st)
MACHINE HEADS	GOTOH GB1
WIDTH at NUT	38mm(4st),46mm(5st)
BRIDGE	GOTOH 203B-4 or 205B-5
PICK UPS	BACCHUS ORIGINAL
CONTROLS	2vol,1Tone(Pull up Turbo SW)
FINISH	OIL FINISH
With ORIGINAL GIGBAG	

*Maching Headstock



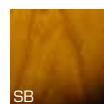
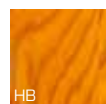
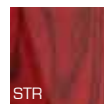
WL-JB ASH5/R / Brown Oil

WL-JB ASH4/R / Light Red Oil

STD-JB ASH



Color



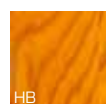
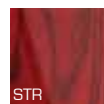
Specifications

BODY	ASH
NECK	MAPLE
FINGER BOARD	INDIAN ROSEWOOD MAPLE
SCALE	34inch
RADIUS	310R(4st),400R(5st)
MACHINE HEADS	GOTOH GB1
WIDTH at NUT	38mm(4st),46mm(5st)
BRIDGE	GOTOH 203B-4 or 205B-5
PICK UPS	BACCHUS ORIGINAL
PREAMP	Aguilar OBP-2
CONTROLS	1vol,1Bal,Master Tone, Treble,Bass,Preamp ON/OFF SW
FINISH	OIL FINISH,URETHANE
With ORIGINAL GIGBAG	

TF ASH



Color



Specifications

BODY	ASH
NECK	MAPLE
FINGER BOARD	INDIAN ROSEWOOD MAPLE
SCALE	34inch
RADIUS	310R(4st),400R(5st)
MACHINE HEADS	GOTOH GB1
WIDTH at NUT	38mm(4st),46mm(5st)
BRIDGE	GOTOH 203B-4 or 205B-5
PICK UPS	BACCHUS WSC GB
PREAMP	Aguilar OBP-2
CONTROLS	1vol,1Bal,Master Tone, Treble,Bass,Preamp ON/OFF SW
FINISH	OIL FINISH,URETHANE
With ORIGINAL GIGBAG	

Bacchus Global Series



001 / 501 Models

In spite of the more reasonable price range, every Global series instrument is handmade with attention to details. The well-seasoned necks are organically shaped and satin-finished for comfortable touch and good playability. Hardware and material are carefully selected and some of important materials such as frets and truss rods are the same ones we use for the Handmade range instruments. Every model is available in 12 different finishes and additionally several types of pickguards are prepared as options so that players can customize their axes as they like. The Bacchus Global series instruments offer a great difference in quality and tone than "medium range instruments" generally seen in the markets.



12

BODY COLORS

5

OPTIONAL PICKGUARDS



WL-001 / 501



WL-001/R / Metallic Orange

WL-501/R / Metallic Green



Color

3TS	BLK	CAR	SOB
FR	LPB	MBL	SW
MGR	MOR	SLV	YLW

*maching headstock exept for 3TS.

Specifications

BODY	PHILIPPINE ALDER
NECK	MAPLE
FINGER BOARD	ROSEWOOD
SCALE	34inch
RADIUS	310R(4st),400R(5st)
MACHINE HEADS	BACCHUS JB Type
WIDTH at NUT	38mm(4st),46mm(5st)
BRIDGE	BACCHUS JB Type
PICK UPS	BACCHUS ORIGINAL
CONTROLS	2vol,1Tone(Pull up Turbo SW)
FINISH	URETHANE
With ORIGINAL GIGBAG	

WL-001AC / 501AC



WL-001AC/R / 3 Tone Sunburst

WL-501AC/R / Snow White



Color

3TS	BLK	CAR	SOB
FR	LPB	MBL	SW
MGR	MOR	SLV	YLW

*maching headstock exept for 3TS.

Specifications

BODY	PHILIPPINE ALDER
NECK	MAPLE
FINGER BOARD	ROSEWOOD
SCALE	34inch
RADIUS	310R(4st),400R(5st)
MACHINE HEADS	BACCHUS JB Type
WIDTH at NUT	38mm(4st),46mm(5st)
BRIDGE	BACCHUS JB Type
PICK UPS	BACCHUS ORIGINAL
PREAMP	BACCHUS ORIGINAL
CONTROLS	2vol,1Tone(Preamp ON/OFF) Treble,Bass
FINISH	URETHANE
With ORIGINAL GIGBAG	

WL-003



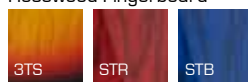
WL-003/R / 3 Tone Sunburst

WL-003/M / Natural

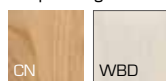


Color

Rosewood Fingerboard



Maple Fingerboard



Specifications

BODY	ASH
NECK	MAPLE
FINGER BOARD	ROSEWOOD or MAPLE
SCALE	34inch
RADIUS	310R(4st)
MACHINE HEADS	BACCHUS JB Type
WIDTH at NUT	38mm(4st)
BRIDGE	BACCHUS JB Type
PICK UPS	BACCHUS ORIGINAL
CONTROLS	2vol,1Tone(Pull up Turbo SW)
FINISH	URETHANE
With ORIGINAL GIGBAG	

TF-001 / 501

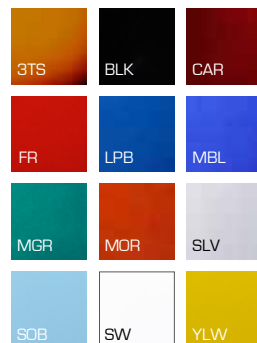


TF-001/R / Candy Apple Red

TF-501/R / Metallic Blue



Color



Specifications

BODY	PHILIPPINES ALDER
NECK	MAPLE
FINGER BOARD	ROSEWOOD
SCALE	34inch
RADIUS	310R(4st),400R(5st)
MACHINE HEADS	BACCHUS JB Type
WIDTH at NUT	38mm(4st),46mm(5st)
BRIDGE	BACCHUS JB Type
PICK UPS	BACCHUS WSC GB
PREAMP	BACCHUS ORIGINAL
CONTROLS	1vol,1Bal,1Master Tone, Treble,Bass,Preamp ON/OFF SW
FINISH	URETHANE
With ORIGINAL GIGBAG	

*maching headstock exsept for 3TS.



BACCHUS UNIVERSE Series

WJB-330

The entry class model designed with the spirits of woodline. WJB-330's slightly downsized body shape offers a comfortable fit and sharp impression. Truss rod hole at the neck end enable the player to adjust the neck relief easily.

UNIVERSE Series



WJB-330



WJB-330R / Candy Apple Red

WJB-330M / Orange



Specifications

BODY	POPLAR
NECK	MAPLE
FINGER BOARD	ROSEWOOD MAPLE
SCALE	34inch
RADIUS	400R
MACHINE HEADS	OPEN GEAR TYPE
WIDTH at NUT	38mm
BRIDGE	VINTAGE FIXED TYPE
PICK UPS	ORIGINAL J-J SINGLE TYPE
CONTROLS	2vol,1Tone
FINISH	URETHANE
With ORIGINAL SOFT CASE	

Accessories

DN-35-EB

Default gig bag for a Handmade series bass.
Color: Black



HMC HS

*HS-30/0.3m *HS-90/0.9m
*HS-300/3m *HS-500/5m
*HS-700/7m *HS-300L/5m *HS-500L/5m



EB-1250

Default gig bag for a Craft series bass.
Color: Black



Superfine cloth

Color: Black, Grey



BD-10

Default gig bag for a Global series bass.
Color: Black



BSP-300

Simple nylon straps
Color: Black, Grey, Blue, Red, Navy



DSC-75B DOT

Color: Black & white dot



Pickup fence

for 4string and 5string
Color: Chrome



DPC-19B

Hardshell case for a bass.
Color: Black, Brown



Complete of Bacchus and Headway

Documentary of Bacchus and Headway instrument. Including manufacturing scenes and interviews with the originator.



BHT-2500

Clip tuner
Color: Black, White



Delrin pick

Gauge: Heavy, Medium
Color: Black, White, Black



Nickel bass string

Gauge: 40-100, 45-105, 50-110, 45-130 [5strings]



Bacchus sand-grip pick

Gauge: 0.80mm, 0.60mm
Color: White, Black



for BASS PLAYERS

Other bass brands in the Deviser family



STR Guitars

The young master luthier of Aska factory Satoru Yatsuzuka started STR guitars in 2006 as a high-end brand which specializes custom-made instruments. STR embodies Satoru's relentless pursuit for creating instruments that surpasses the player's imagination, built to the highest level of precision, quality, tone and with best materials available.

WEB : www.deviser-str.com



MOMOSE Custom Craft Guitars

Series of electric guitars and basses made with vintage feeling.

Named from our master luthier Momose Yasuo, who is renowned as the originator of Headway acoustic guitars. While recognizing the traditional and vintage aesthetics, Momose are carefully constructed to also meet the essential needs of the contemporary guitarist. Momose is proud to offer guitars of the best quality which meet the demands of professional musicians today.

WEB : www.deviser-momose.com



SH Guitars

SH guitars offers unique instruments beyond genres to give today's musicians a hint to be more creative and enjoy playing music in more various methods.

SH guitars are created by the team of Headway acoustic guitars who have accumulated much expertise and techniques through their long-time experiences in acoustic guitar building.

WEB : www.deviser-headway.com



SPECIAL AGENT

Deviser Co.,Ltd.

7072-6 Sasaga, Matsumoto Nagano, Japan 399-0033

E-Mail : info@deviser.co.jp

Website : www.deviser.co.jp

BACCHUS Guitars WEB SITE

www.deviser-bacchus.com

10-01-2013

Please bear in mind that the photos may be slightly different from actual colors.
Details of specification and design may be changed without notice due to improvements.